



THE VOICE OF KOL EMET

December 2010



Volunteerism

By Rabbi Howard Cove
rabbicove@kolemet.org

During our Shabbat service on December 10th, Congregation Kol Emet honored and installed our Board of Directors. At the service I shared the following poem:

The key of our success rests in people like you, who embody the spirit of leadership by saying "Yes I can, and so can you!"

Thanks for your inspiring dedication and tremendous example for Kol Emet.

With gratitude in our hearts for your contributions to our cause, we want to thank you with this service with this communal round of applause.

The credit for our achievements firmly rests with you, our dedicated leaders.

Thank you so much for all your hard work, to bear witness to your passion has been a valuable perk.

We wouldn't have asked for a more dedicated team of volunteers, and words cannot express the gratitude we feel to have you here.

It is a pleasure and a privilege to work with you.

What I have seen over the last six months is a group of people who have been a true blessing to this community.

The great theologian Reinhold Niebuhr taught that nothing worth doing could be done alone. The many members who volunteer with gifts of time, energy, talent, and love make it possible for us to pray, teach, counsel, and reach out to so many others in our community.

In the Book of Leviticus, Parshat Vayikra, we find the word *N'davah* – freewill offering, a gift of the heart. The word for volunteer is *mitnadiev*, literally meaning one who offers a freewill gift of him or herself.

What's Inside

Rabbi Cove's Message	1
From Carrie	2
Announcements	3
B'nai Mitzvah	5
Donations	6
Anniversary and Birthday Announcements	8
Kol Emet Business Directory	9
Kol Emet Contact Information	10

The idea is a powerful one. It implies that a truly great Jewish act is one of selfless devotion and dedication. When we give of ourselves freely in the spirit of a *mitnadiev* we serve a higher purpose.

Victor Frankl, the great psychologist who survived Auschwitz, saw Nazis strip prisoners of everything. They had nothing left but one thing – their inner world of thought. His conclusion from all that he witnessed was that "we who lived in the concentration camps can remember the people who walked through the barracks comforting others, giving away their last piece of bread." They offer sufficient proof that when everything is taken away from a person, one thing remains – to choose one's attitude in any given set of circumstances, to choose one's own way. Giving of yourself, being a *mitnadiev*, is not just a nice thing to do, it is a powerful act.

When you volunteer, you raise yourself to a higher level, and raise all of those around you as well. If we are going to continue to thrive as a community, we need more of us in this generation of Kol Emet to stand up and choose

to serve. It is true that lives are busy and there is much competing for our time, but we need you! Volunteering for Kol Emet will be worth the time and effort that you give. The Beatles sang "the love you take is equal to the love you make." Help keep what you love about Kol Emet alive! Get involved.



From Carrie

By Carrie Shames Walinsky
Kol Emet Educational Director
cwalinsky@kolemet.org

Welcome to the month of the "December Dilemma." Amazing how a happy and festive time can bring so much stress to all of us! Even our youngest students feel the stress, whether they are wrestling with their own identity or stressing over why they do not see equal representation of their holiday. It really is a very insightful time to be a Jewish educator.

For me, I try to focus on the positive. I found this wonderful piece to share with you:

Rabbi Naomi Levy's Chanukah Lessons:

1. *Don't give into darkness, create light.*
2. *When you feel spent, remember that a little oil goes a long way.*
3. *Life is as unpredictable as a dreidle. Enjoy the good, expect to face bumps, know they too will pass.*
4. *Miracles will happen. Expect them, look for them, and recognize them.*
5. *Stand up and fight for what's right.*
6. *We have the power to rebuild, to pick ourselves up, and illuminate the world.*

Of course, I will practice what I preach. As I write this article, we are putting the final changes (#2 – a little oil) on what I see as a dream come true. 36 (that's double chai) Kol Emet members and extended family are off to Israel for a 10 day adventure. For me personally, this is a mini-miracle (#4)! Every time I get to go "home", I radiate (#1). When we return, we will be sharing our adventures and experiences (#6). It's never too early to start planning our next Kol Emet Israel experience; perhaps 2012 is a good goal (#5)!

However, if an Israel trip is not in the near future, perhaps a virtual trip will whet your appetite. I invite you to our Tu B'Shevat Family Education Program on Sunday January 23rd at 10:30am. We will taste Israeli fruits, be exploring a giant map of Israel, and participating in fun activities based on the holiday of Tu

B'Shevat. It may be cold outside, but we will warm our hearts with memories of Israel.

Pay it Forward- Dina Bortnichak

Someone recently asked me how I find that extra hour in my day that no one else has. Perplexed I asked what she meant, and she explained that so often when she sees an event at the synagogue or our elementary school she sees my name as a volunteer. I replied that I make time for what is important to me.

I have a very full life. I had a lucrative and fulfilling career for many years, and now I am blessed to stay home and raise our children. I want to give back to my community, and I have found that Kol Emet is a great place to devote my efforts. We joined KE before we even moved to Yardley. We were visiting a friend who brought us to the first Tot Shabbat. It was the first time I met Risha Neil and I was amazed that 1 person had made this incredible night happen. We were in awe at the warmth that emanated from the social hall. It felt like home to us, and we began house hunting the next day in Yardley. We joined KE and signed our daughter up for preschool before we had closed on our new house. Immediately we were welcomed by Carrie and Rabbi Cove and felt instantly connected.

I do not consider myself a religious person. We are an interfaith family, and we strive to lead a life governed by Jewish values. We have a Christmas tree so that our children can enjoy the festivities of their daddy's holidays. Religion was not the primary reason for us to join the synagogue. We joined for community, and we have found it. Our friends attend the events and all of our children have a blast.

My daughter begged me to begin religious school this year even though I would have preferred her to wait until 3rd grade. I didn't enjoy religious school growing up, and I feared that she might tire of it before her time. Was I ever wrong - she looks forward to Tuesdays as if she were going on a playdate!

I think it is essential to lead by example and my children see my synagogue volunteering as my job. My husband, Dave, has recently been handling the communications for the synagogue, in addition to his full time job and helping around the house with our family. I am amazed at the extra hours he finds in his day!

When I first moved here and was asked if I could help with an event I would try even though I had a toddler glued to my hip. Now that my little guy thinks of KE as his second home, I find myself with some extra free time. I choose to fill these gaps with Family Shabbats, preschool events and my KE Board position. In addition, I am currently moving into Religious school events, as my children are getting older. If I don't help plan them I

know that they may not exist when my children are ready to attend.

I value my free time as much as the next person but giving of myself has been very rewarding and has brought me to a better place in my life. At times when I volunteer, I find myself as stressed out as I was when I was in the corporate workforce. Sometimes, I wonder if it all is worth it, then I stand back and look at 175 smiling faces at our KE Family Chanukah party and know exactly why I am here. Not only did I do a Mitzvah by helping the synagogue, I modeled to my children what it means to give back to their community and I hope that someday they will fill my shoes. Please consider helping at an event. I promise you will thank me for being a part of this beautiful Mitzvah.

Announcements

Adult Education with Rabbi Cove

Wednesday Mornings at 9:15am:

- Read and discuss the Torah portion of the week
- Learn basic Hebrew
- Explore the meanings of the holidays as they occur throughout the Jewish calendar
- Conversation on current events in our community and across the world in Israel

Sometimes we cover all of these in one session! Come and get informed, and inspired...

Friday Mornings from 9:00am-10:30am:

Originally established by its charter members as a Torah study group, over the years this class has gone on to read the entire Hebrew Bible, parts of the Koran, as well as the Christian Bible. We have also read novels by important American Jewish authors. We are now about to read the novel The Finkler Question, an exploration of Jewishness and what it means to be Jewish today.

Join fellow congregants in weekly discussions that will challenge you, enrich you, and heighten your appreciation for the intellectual talent in our community.

Religious School PTO

The Religious School PTO was busy with Holiday Shop this month. Special thanks to Barbara Cohen and Eileen Cove for shopping, wrapping, and running this huge event. We have already started shopping for next year...some great bargains are on the way! Also thanks to the volunteers who helped us by wrapping presents for the kids.

In conjunction with the Pre-School PTO, we threw a teacher/staff appreciation dinner last week. Catered by Franco's, the evening was full of good food and wine.

Thanks to Cheri Lee, for her delicious chocolate favors that each staff member received. (If you haven't tried Cheri's chocolates, you are really missing out! Not only are they fantastic, but beautiful as well!)

Our class Shabbats are around the corner, so start watching (and reading!) your e-mails for your child's class and assignment on a food/beverage item to bring. Also in the coming months we will be looking for volunteers for the Purim carnival, Passover Seder and Aleph Consecration. PLEASE give your time to the PTO.

Lastly, the PTO is looking for two individuals to take over the Co-President's role by June of 2012. We would like to have a year training these individuals, who would work with us side by side beginning in September of 2011 to make a smooth transition into the position. If you are interested, please contact either of us and we'd be happy to discuss the responsibilities.

Happy Chanukah and Happy Healthy New Year to all.
Randi Davis and Meryl Shoneman
Religious School PTO Co-Presidents

Update on the Forest Fires in Israel

Among those killed in fire that continues to rage, here in Israel was David Navon. David was a warm, gentle man from Nes Tziona who leaves behind his wife of 25 years and two children. David was the bus driver transporting the prison service workers to evacuate 500 inmates from the prison located in the path of the fire. Reports say what gusts of wind helped the massive flames travel over 1500 meters in less than three minutes. There was no escape on the tiny road from Atlit to Beit Oren. David was one of our regular drivers at IsraelExperts at and had touched the lives of countless visitors to Israel. May his memory be a blessing.

The horrible disaster in the Carmel Forest and Haifa area has taken a tremendous toll with over 40 dead; hundreds of homes burnt; some 25,000 people evacuated from 15 different communities; over 12,000 acres of land scorched; an estimated 5 million trees destroyed. The young, vibrant artist community of Ein Hod, Kibbutz Beit Oren, the Druze village of Isfiya, the Arab village of Ein Hud, the Hai-Bar Nature Reserve – all devastated by the fire. The dead include Arabs & Jews, men & women, and new immigrants from Ethiopia and the FSU.

As they have done so many times in very different circumstances, individuals and communities from across the county have opened their homes to provide food, clothing, shelter, warmth & comfort to those who have been evacuated. It's been a blessing that, at times the children are able to forget for a bit, and enjoy the vacation-like feeling of living on a kibbutz, in a hotel, in

someone's home or in a community center. For the parents, it's more complicated as they worry about what they will and will not find waiting for them when they return to their homes.

It's been a blessing to see over 30 firefighting aircraft helicopters have arrived to assist from the United States, Turkey, Greece, Cyprus, Britain, Russia, France, Italy, Switzerland, Germany, Azerbaijan, Spain, Romania, Holland and Canada. It's also important to note that the Palestinian Authority is transferring three fire trucks to Israel.

Jewish organizations across the world have established emergency campaigns to assist with not only fighting the fire, but also helping to rebuild for those who have lost their homes. I recommend people look for ways to help check out the two options below through the New Israel Fund and ARZA:

- New Israel Fund Fire Response Fund
<http://www.nif.org/>
- ARZA / URJ Fire Emergency Fund
<http://www.arza.org/news/israel/fund/>

Other resources & funds include:

- Jewish Federations of North America & Jewish Agency
<http://www.jewishfederations.org/page.aspx?id=234891>
- The Jewish National Fund's (JNF) Forest Fire Campaign <http://www.jnf.org/>
- The Jewish Agency's Critical Request for Fire Disaster Relief page:
www.jafi.org.il/JewishAgency/English/About/Updates/Personal+Stories/Archive/2010/dec03.htm
- Many local federations are also running their own emergency campaigns.

With prayers of healing, hope and light at this time of suffering and darkness,

Steve Burnstein, Kibbutz Gezer
D.N. Shimshon ISRAEL
steve@theburnsteins.com

DECEMBER B'NAI MITZVAH

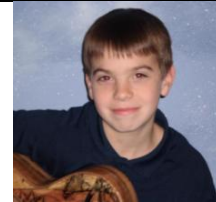
Brandon Millman
Son of Linda and Brad

December 4, 2010 AM
Parshat Miketz

Garrett Cantor
Son of Tracy and Terry

December 4, 2010 PM
Parshat Vayigash

Garrett collected school supplies for needy students at his alma mater, Holland Elementary.



Brooke Levy
Daughter of Hillary and Michael

December 11, 2010 AM
Parshat Vayigash

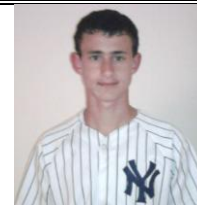
Brooke collected books for children in Womanspace (a shelter for woman and children affected by domestic violence.) She also sponsored a child through the Homefront Birthday club.



Kyle McCormick
Son of Mindy and Matthew

December 11, 2010 PM
Parshat Vayechi

Kyle raised money by running in a race to support pancreatic cancer in memory of his grandmother.



DONATION LIST

In Memory of	Fund	Donor
Irwin Shoneman	Caring Committee	Shelley Miller & Michael Seltzer
Irwin Shoneman	Assoc. Rabbi's Discretionary	Lori and Jay Frank
Irwin Shoneman	Building	Tony & Heidi Bush
Irwin Shoneman	Prayer Book	Mark & Dayna Henry
Irwin Shoneman	Building	Herbert & Charlotte Levin
Irwin Shoneman	Building	Fran and Harvey Fried
Irwin Shoneman	Toby Frey Scholarship	David and Jill Gordon
Rabbi Robert A. Raab	Rabbi's Discretionary	Joel Raab & Gayle Share-Raab
Samuel Maisels	Building	Phyllis Carson
Dr. Joel Rosenbaum	Toby Frey Scholarship	Carol and Sol Bress
Beloved husband of Cina Simon	Preschool	Eric & Elyce Rosen and Family
Elaine Weiss	Toby Frey Scholarship	Richard Weiss
Elaine Weiss	Rabbi's Discretionary	Richard Weiss
Mort Malavsky	Assoc. Rabbi's Discretionary	David and Jill Gordon
Mort Malavsky	Preschool	Tony & Heidi Bush
Gussie Nelson	Rabbi's Discretionary	Arnold Nelson
Harry Batt	Rabbi's Discretionary	Arnold Nelson
Morton Krause	Prayerbook	Howard and Marcy Goldhammer
Arnold Barrish	Rabbi's Discretionary	Joel & Miriam Barrish
Claire Kuperman	Rabbi's Discretionary	Joel & Miriam Barrish
Clara Zar	Toby Frey Scholarship	Jacki and David Folkman
Clara Zar	Prayerbook	KE Religious School Staff
Sarah Gag	Rabbi's Discretionary	Alex and Maya Boguslavsky
Anna Boguslavsky	Rabbi's Discretionary	Alex and Maya Boguslavsky
Betty Krentzman	Rabbi's Discretionary	JoAnn and James Sachs
Maurice Cohen	Assoc. Rabbi's Discretionary	Allan M. Cohen
Ben H. Cohen	Caring Committee	Ernest Cohen, MD
Phil Jasner	Preschool	Ashley Krakow, Jared Kaplan & Family
In Honor of	Fund	Donor
Bat Mitzvah of Josephine Gilmore	Caring Committee	Shelley Miller & Michael Seltzer
Bar Mitzvah of Josh Rothenberg	Mitzvah	Barbara Rothenberg Reaveley
B'nai Mitzvah of Matthew & Tyler Gaeman	Building	Darryl and Linda Gaeman

Condolences To:

Andy Malavsky on the passing of his beloved father, Morton Malavsky
 Bonnie Gold on the passing of her beloved mother, Clara Zar

KOL EMET DONATION COUPON

Donor Name _____

Address _____

City, State, Zip _____

Recipient _____

Address _____

City, State, Zip _____

Enclosed is my gift of:

- \$18
- \$50 (for Prayerbook)
- \$36
- \$180
- \$360
- Other – Please specify

Please use my gift for:

- Building Fund
- Charles A. Fisher Memorial Sanctuary Fund
- Library Fund
- Rabbi's Discretionary Fund
- Mitzvah Fund
- Bruce Levitt (Playground) Memorial Fund
- Associate Rabbi's Discretionary Fund
- Oneg (specify date)
- Outdoor Sanctuary Fund

This gift is in **honor** of: _____

This gift is in **memory** of: _____

Send to: Congregation Kol Emet •1360 Oxford Valley Road•Yardley, PA 19067

Staying Informed at Kol Emet

There are many ways we try to keep you informed:

- The Voice: This Newsletter (http://www.kolemet.org/documents/jun_10_Voice.pdf) and past issues (<http://www.kolemet.org/monthly.asp>).
- <http://www.kolemet.org/>: Our place on the web. Includes the calendar (<http://www.kolemet.org/calendar.asp>).
- The Whisper: Weekly Email of upcoming events at Kol Emet and in the Jewish community. (<http://www.kolemet.org/weekly.asp>)
- Religious school: Materials sent home with your children every week.
- Shouts: Emails sent to alert you to imminent events and meetings.
- Congregational Meetings: Meet at Kol Emet to both listen to and be heard by your Board

Make sure all the adults in your family get The Weekly Whisper e-mail. If your family has more than one e-mail address, please feel free to sign-up your multiple addresses. To get The Whisper, send an e-mail to office@kolemet.org.

Mazel Tov to All of Kol Emet's January Wedding Anniversaries and Birthdays

Anniversaries

<u>Day</u>	<u>Couple</u>
12	Bill & Helene Blacker
28	Michael & Deborah Spiro

Birthdays

<u>Day</u>	<u>Name</u>
2	Jason Hirsch
2	Elisa Malinoff
3	Joshua Rothenberg
4	Brandon Ostrow
4	John Waldman
5	Jacki Folkman
6	Marcia Eisner
6	Alyson Hally
6	Larry Vladimir
6	Scott Waldman
8	Kevin Bloch
8	Tina House
8	Ryan Kubanoff
8	Andy Malavsky
8	Jesse Pazdera
9	Eileen Brackup
9	Remi Broitman
9	Jason Fink
9	Brian Hanck
10	Matthew Gaston
11	Lyra Stein
11	Beth Zuckerman
12	Michelle Smilk
13	Mitchell Friedman
13	Paul Levy
14	David Collopy
14	Jess Eichholz
14	Staci Nosheny
14	Sue Kaplan
16	Noah Harrison
17	Jeff Epstein
17	Adam Gressen
17	Bradley Katz
17	Barbara Shipon
18	Michael Levy
19	David Bortnichak
20	Tracy Fischer
20	Hannah Melamed
20	Molly Sproul
20	Amy Stern
22	Kristopher Turner
23	Natalie Frank
23	Joely House
24	Elizabeth Adler-Harrison
24	Wyatt Alexander
24	Simon Cohen
24	Jeffrey Erinoff
24	Rick Wortzel
25	Garrett Cantor
25	Max Malavsky
25	Blake Millman
26	Alex Cohen
26	Michelle Deodati
26	David Holzberg
26	Sara Sachs
27	Sydney Broitman
27	Miranda Cantor
27	Jay Fishman
27	Michael Neil
28	John Gaynor
28	Roxy Lee
28	Sylvia Thomas
29	Chris Catalano
31	Genevieve Shultz

Kol Emet Business Directory

Advertisements from members of the Kol Emet community

Senior Care Planning Services, a Geriatric Care Management service, operated by Bill Blacker

Provides assistance including a comprehensive assessment and care plan for senior adults and their families who are seeking help with long term care planning. The Service can be reached at: 215-901-6244/215-321-3312

email: wblacker@seniorcareplanningservices.net

Bill Blacker

Say No to Clutter, LLC

Feeling overwhelmed by clutter?
Can't find your favorite sweater?
Paying too many late fees, can't find your bills?

Call *Say No to Clutter* Today!

Risha Neil, Professional Residential Organizer
risha@saynotoclutter.com
215-668-7992

Risha Neil

MARK HENRY FASHIONS WHOLESALE WAREHOUSE

Summit Center
640 W. Street Road, Feasterville, PA 19053
215-357-1815
<http://www.markhenryfashions.com>

No One Will Believe What You Paid For Your Dress!

Incredible Selection of Mothers, Guests of the Wedding, Bar/Bat Mitzvah, Prom and Plus Sizes

OPEN TO THE PUBLIC WEEKENDS ONLY:
Friday 4:00pm – 9:00pm, Saturday 10:00am – 5:00pm,
Sunday 11:00am – 5:00pm

Mark & Dayna Henry

Attention Kol Emet Business Owners Advertise in this Newsletter

In the spirit of building community, *The Voice* includes text advertisements from Kol Emet congregants who have businesses offering products and services. Text ads only, no business cards or graphics. In addition to your text, we will list your name (if not included in your copy) so the reader knows which Kol Emet congregant is involved in the business.

Your listing will include:

Name of Company

Address (if business has a storefront location)

Contact (Phone, Email, and/or Web Address)

50 word description

Cost is \$10/issue.

Send information to the Kol Emet Office
(office@kolemet.org) by the 1st of the month for a listing in the next issue.

CONGREGATION KOL EMET CONTACT INFORMATION

Rabbi	Rabbi Howard Cove (rabbicove@kolemet.org)	215-493-8522 ext. 101
Associate Rabbi	Rabbi Susan Schein (rabbischein@kolemet.org)	215-493-8522 ext. 112
Executive Director	Bob Frey (bfrey@kolemet.org)	215-493-8522 ext. 113
Educational Director	Carrie Walinsky (cwalinsky@kolemet.org)	215-493-8522 ext. 103
Assistant Preschool Director	Susan Kaplan (skaplan@kolemet.org)	215-493-8522 ext. 103
Office Administrator	Judi Pogachefsky (office@kolemet.org)	215-493-8522 ext. 100
President	Robert Moses (natanbenmoshe@verizon.net)	215-321-9927
Vice President	Lisa Shiller (elizshiller@yahoo.com)	215-493-6822
Vice President	Chuck Weiner (charles@charlesweinerlaw.com)	215-932-0424
Secretary	Brad Pedrow (bpedrow@gmail.com)	609-775-7536
Treasurer	Dan Goldman (dgoldman@decisiondist.com)	215-493-8203
Past President	Lisa O'Rourke (lisa.orourke@comcast.net)	215-295-9212
Religious Education	Jill Gordon (yardley4@comcast.net)	215-295-8838
Adult Education	Alan Kaplan (alkaplan@ptd.net)	570-640-2526
Early Education	Dina Bortnichak (dina@bortnichak.com)	215-295-1646
Finance	Eric Schwartz (eschwartz@comcast.net)	215-497-1057
Community Relations	Andrea Seidman (talzee@comcast.net)	215-736-8494
House	Rich Nedelman (rlnalla@yahoo.com)	215-493-5587
Long Range Planning	Burt Sutker (bjsutker@aol.com)	609-730-0837
Membership	Jacki Folkman (jackifolkman@aol.com)	215-860-3678
Preschool PTO Co-President	Risha Neil (rishaneil@aol.com)	215-428-1884
Preschool PTO Co-President	Allyson Reed (allysonreed.jaden@verizon.net)	215-493-5290
Religious School PTO Co-President	Randi Davis (davis193@comcast.net)	267-392-5265
Religious School PTO Co-President	Meryl Shoneman (shonemanfamily@comcast.net)	215-321-2381
Ritual	Alan Kaplan (alkaplan@ptd.net)	570-640-2526
Social Action	Wendy Jacobson-Simon (wellwatched@verizon.net)	215-321-1465
Sisterhood	Shelley Miller (shelleyjm@aol.com)	215-493-6856
Men's Club	Mark Henry (squirehenry@aol.com)	215-493-0627
Youth Programming	Heidi Bush (heitobush@verizon.net)	215-493-4080
Hilltoppers	Judy Kaufman (hjkman@comcast.net)	215-579-5950
Caring Committee Chair	Michael Seltzer (mgs48@aol.com)	215-598-8233